

HILDABRAD PARK

A RESUBDIVISION OF A PART OF "EDG RIVA" SUBDIVISION
STUART, MARTIN COUNTY, FLORIDA
SCALE 1"=100' SEPT. 1948

Plat filed for record on 1st day of December 1948, and recorded on Page 64 of Plat Book 2 in the office of the Clerk of the Circuit Court of Martin County, Florida.

J. Pomeroy
Clerk of the Circuit Court of Martin County, Florida.

DEDICATION

State of Florida, ss.
County of Martin)
Know All Men By These Presents, that Hildabrad Park, Inc., a corporation organized and existing under the laws of the State of Florida, [REDACTED]
The Trustees of The Diocese of South Florida, a Florida non-profit Corporation, being [REDACTED] the owners of the following described land located in the City of Stuart, Martin County, Florida, described as follows, to wit:
All of Government Lot 1 Section 4 Township 38 South, Range 41 East, (except the Easterly 245.25 feet thereof) and also the Easterly 480 feet of Government Lot 2 in Section 4 Township 38 South, Range 41 East (the above described properties having been formerly platted as Blocks 1 to 14 inclusive of Edg-Riva Subdivision according to Plat recorded in Plat Book 1 page 53 Public Records of Martin County, Florida, together with streets adjoining said blocks);
Said parties have caused the attached plat to be made, and said land to be subdivided as indicated on this Plat, and do hereby dedicate to the perpetual use of the public the roads, alleys and streets as shown hereon, reserving however unto themselves, their heirs, successors, legal representatives and assigns, the reversion or right of reversion of the said streets or public roads contiguous to their said properties, if the same should be abandoned by the public or discontinued by law.
Dated this 12th day of November 1948.

HILDABRAD PARK, INC., a Florida Corporation
By Robert R. Wason
Robert R. Wason, Its President

Witnesses: Maxine Fran THE TRUSTEES OF THE
Elizabeth Dyeon THE DIOCESE OF SOUTH FLORIDA, a Florida Corporation
By Jno. D. Wing (SEAL)
Jno. D. Wing, Its President

ACKNOWLEDGMENTS

State of New York } ss.
County of New York }
Before me personally appeared Robert R. Wason and Hilda B. Wason to me well known to be the President and Secretary respectively of Hildabrad Park, Inc., a Florida Corporation, and they did acknowledge before me that they executed the foregoing dedication on behalf of said corporation and with authority of its Board of Directors.
Witness my hand and official seal this 12th day of November 1948.

CLARK I. SCOTT
NOTARY PUBLIC, STATE OF NEW YORK
Residing in Nassau County
Nassau County Court's No. 9411
Examination expires March 30, 1950
Notary Public for the State and County Aforesaid.
My Commission expires MARCH 30, 1950

[REDACTED]

State of Florida } ss.
County of Orange }
Before me personally appeared Jno. D. Wing well known to me to be the President of Trustees of The Diocese of South Florida, a Florida Corporation, and he did acknowledge before me that he executed the foregoing dedication on behalf of said corporation and with authority of its Board of Directors.
Witness my hand and official seal this 22 day of November 1948.

Elizabeth Dyeon
Notary Public for the State and County Aforesaid.
My Commission expires July 15, 1951

CERTIFICATE

State of Florida } ss.
County of Martin)
I hereby Certify that the attached plat is a true and correct representation of a survey made under my direction, that there are no encroachments except as shown, and that it is true and correct to the best of my knowledge and belief, and that permanent Reference Monuments have been properly placed as required by law.

Joseph S. Greenlees
Joseph S. Greenlees
Registered Land Surveyor
Florida Certificate No. 665

Subscribed and sworn to and before me at Stuart, Martin County, Florida this 24 day of November 1948.

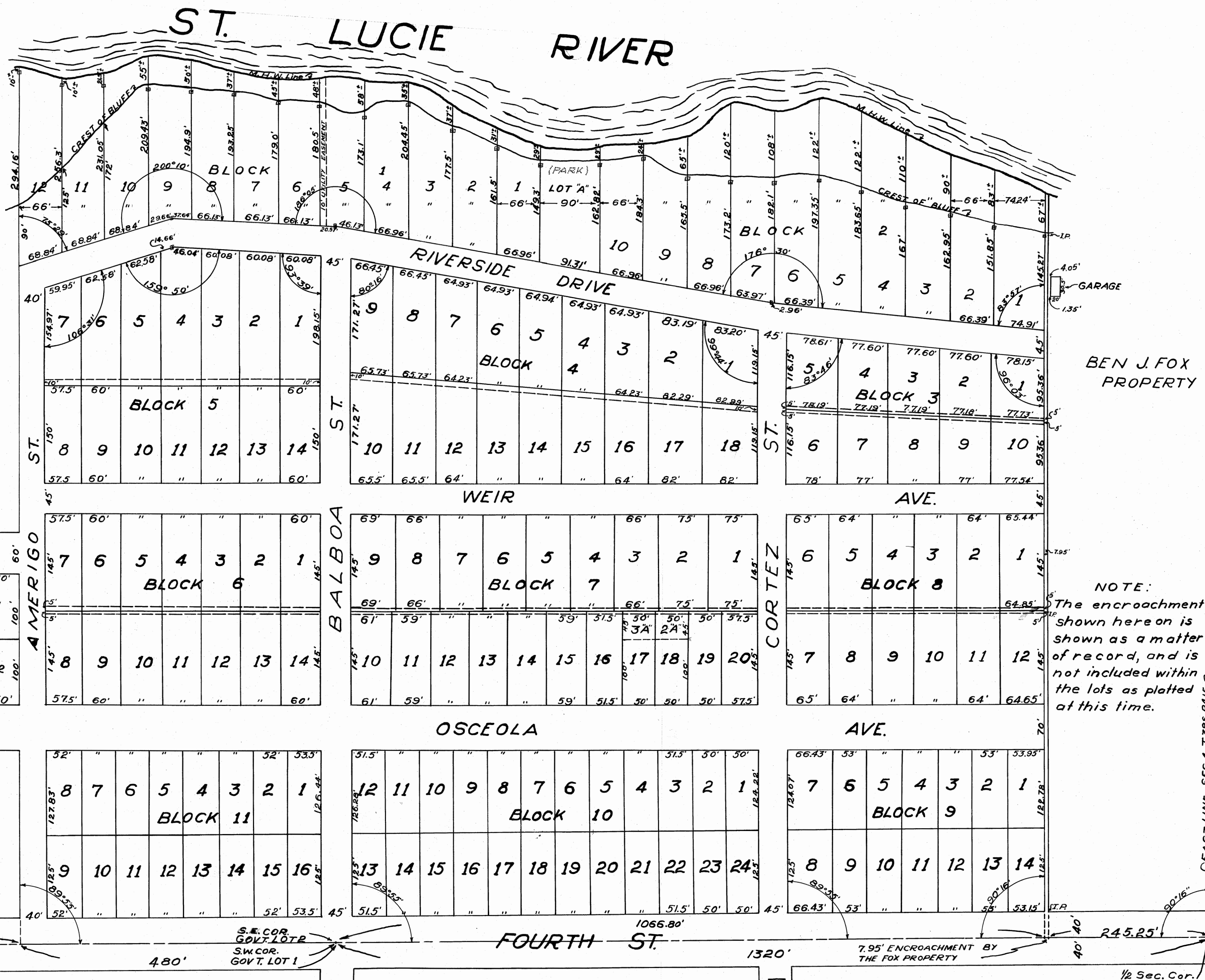
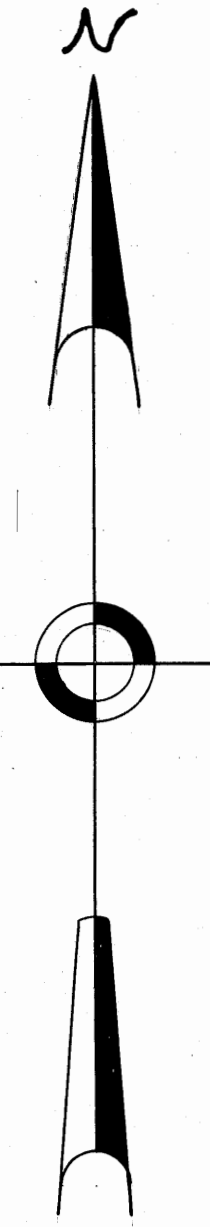
M. R. Eastmigh
Notary Public for the State and County Aforesaid.
My Commission expires June 6, 1949

Approved this 24th day of November 1948, City Commission, City of Stuart, Florida.

By L. R. Smith
City Manager

Approved this 1st day of December 1948 by Board of County Commissioners, Martin County, Florida.

By J. Pomeroy
Clerk of Circuit Court



NOTE:
All lot corners are marked with 2"x2" Concrete Markers.
All block corners are marked with 4"x4" Concrete Markers.

1/2 Sec. Cor. of SE. Cor. of Govt Lot 1

WEST LINE SEC. 4, T. 38 S., R. 41 E.